



# ERCOLINA® HANDRAIL FABRICATION SYSTEM

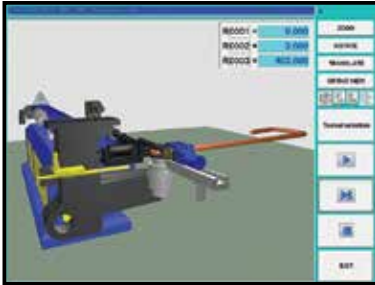
## Ercolina's handrail professional series package includes:

- Erco76 three axis CNC automatic bending machine
- 1-1/4" pipe schedule 40 set complete
- 1-1/2" pipe schedule 40 set complete
- 1-1/2" tube for .120 wall set complete
- Auto mandrel lubrication pump
- Bendtech software for external computer
- Machine training on-site

- Produce handrail to design in minutes
- Dramatically reduce operator handling and shop labor cost
- Improve quality to your customers providing mandrel quality bends in steel, stainless and aluminum
- Eliminate additional cost of weld elbows, material waste, weld, grind and finish operations
- Control your production time and process
- Quickly store and recall previous handrail programs
- Ercolina's tool set data files maintain machine start position enabling the operator to quickly change to the next job
- Optional software available directly imports properly formatted IGES and DXF engineering files from compatible CAD programs
- Create your own data with optional Bend-Tech software
- Professional on-site machine training included



# Interactive Touch Screen Control



GRAPHIC SIMULATION



PART LAYOUT



TOUCH SCREEN PROGRAMMING



MAIN SCREEN



BEND ANGLE & SPRINGBACK



STORE ALL TOOL SET INFORMATION



STORE MATERIAL INFORMATION

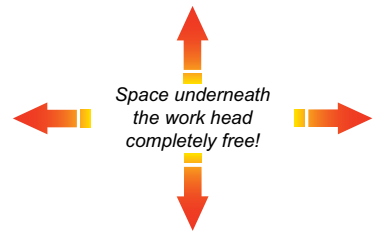
## Interactive CNC Control Available on these Models:

- ▶ Erco Bender 65
- ▶ Erco Bender 76
- ▶ GB90 Giga Bender
- ▶ GB100 Giga Bender
- ▶ GB130 Giga Bender
- ▶ GB200 Giga Bender



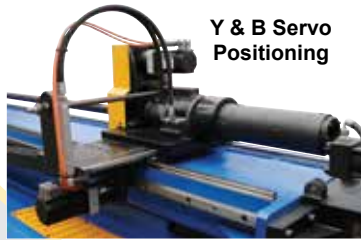
# EB65 & EB76 Erco Bender

## Automatic 3 Axis Mandrel Machines



Space underneath  
the work head  
completely free!

Part# EB76CNC6V5



Y & B Servo  
Positioning



## Fully Automatic – Cost Effective

### FEATURES

- Extended bending head capable of bending complex shapes and profiles
- Automatic or manual bend sequencing
- Independent pressure and clamp die adjustment
- Programmable carriage movement for tight radii
- Interactive touch screen with auto and manual operating modes, system diagnostics and multiple language capability
- Standard right hand bending direction
- Programmable material springback settings for each bend angle
- Programmable auto mandrel positioning allows operator to optimize extraction for improved bend quality
- Programmable tail stock interference zone monitors position and eliminates workhead collision
- USB for unlimited program memory storage and communication
- Hand-held remote bending control, certified class 3 safety and all electrical components UL, CSA and CE approved
- Graphic bend simulation software included

## EB65 & EB76 Capacities & Specifications

| Model   | EB65               | EB76               |
|---|--------------------|--------------------|
| Max. Tube Capacity – Mild Steel<br>Stainless<br>Square Tube | 2½" (.083 wall)    | 3" (.083 wall)     |
|   | 2½" (.065 wall)    | 3" (.065 wall)     |
|   |                    | 2" (.065 wall)     |
| Max. Pipe Capacity  | 1½" Sch. 40        | 2" Sch. 40         |
| Max. Bending Radius   | 9.8"               | 11.8"              |
| Min. Bending Radius   | 1.5 x Ø            | 1.5 x Ø            |
| Max. Shaft Rotation   | 210°               | 210°               |
| Max. Bending Angle  | 185°               | 185°               |
| Max. Tailstock Capacity                                     | 2½"                | 3"                 |
| Interactive Touch Screen Control                            | 10" color screen   | 10" color screen   |
| Max. Material Length – Standard table<br>Optional table     | 13'                | 13'                |
|   | 21'                | 21'                |
| Minimum Underhead Swing Clearance                           | 14.5"              | 15.5"              |
| Length of Bending Head                                      | 59"                | 59"                |
| Nominal Hydraulic Pressure                                  | 150 bar            | 150 bar            |
| Maximum Carriage Travel                                     | 125"               | 125"               |
| Number of Programs  | Unlimited with USB | Unlimited with USB |
| Precision of Bend Angle                                     | +/- .5°            | +/- .5°            |
| Bending Speed   | Programmable       | Programmable       |
| Motor 480V 3ph at 50/60 Hz                                  |                    |                    |
| Dimensions (Height x Width x Length)                        | 52" x 44" x 205"   | 52" x 44" x 205"   |
| Weight  | 7,200 lbs.         | 7,400 lbs.         |

Contact CML USA for complete technical specifications.

All capacities based on mild grade materials; heavy wall and high tensile materials reduce machine capacity.

- Programmable internal mandrel lubrication (3 settings)
- High capacity with auxiliary hydraulic oil cooling
- Quick-change tooling system
- Standard 13' table, extension available
- Tail stock with through spindle accepts longer material
- Accepts YBC and XYZ input values
- Y - Feeding Electric Servo
- B - Rotation Electric Servo
- C - Bending Hydraulic CNC