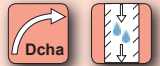


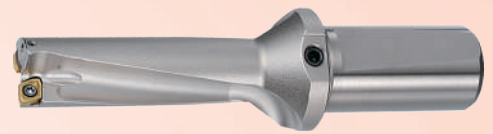
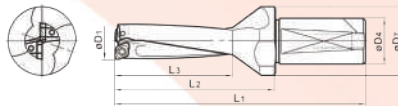
Broca TAF para plaquita, 3xD y 4xD

A03803



Descripción:

- Excelente rigidez.
- Con placa de 4 lados.



Ø D1 (mm.)	Nº dientes	Veces el Ø	Dimensiones (mm.)					Tipo de placa		Tornillo roscado	(1) Llave	(2) Llave	Código	Precio
			D4	D7	L1	L2	L3	Tipo	Tamaño					
12,0	2	3	20	25	94	51	41	GCMT	040204-UX	TS2	(1)TKY06F	9011331	283,00	
12,0	2	4	20	25	106	63	53	GCMT	040204-UX	TS2	(1)TKY06F	9011332	302,00	
12,5	2	3	20	25	94	51	41	GCMT	040204-UX	TS2	(1)TKY06F	9011333	283,00	
12,5	2	4	20	25	106	63	53	GCMT	040204-UX	TS2	(1)TKY06F	9011334	302,00	
13,0	2	3	20	25	97	54	44	GCMT	040204-UX	TS2	(1)TKY06F	9011335	283,00	
13,0	2	4	20	25	110	67	57	GCMT	040204-UX	TS2	(1)TKY06F	9011336	302,00	
13,5	2	3	20	25	97	54	44	GCMT	040204-UX	TS2	(1)TKY06F	9011337	283,00	
13,5	2	4	20	25	110	67	57	GCMT	040204-UX	TS2	(1)TKY06F	9011338	302,00	
14,0	2	3	20	25	100	57	47	GCMT	040204-UX	TS2	(1)TKY06F	9011339	283,00	
14,0	2	4	20	25	114	71	61	GCMT	040204-UX	TS2	(1)TKY06F	9011340	302,00	
14,5	2	3	20	25	100	57	47	GCMT	040204-UX	TS2	(1)TKY06F	9011341	283,00	
14,5	2	4	20	25	114	71	61	GCMT	040204-UX	TS2	(1)TKY06F	9011342	302,00	
15,0	2	3	20	25	103	60	50	GCMT	060204-UX	TS2	(1)TKY06F	9011343	283,00	
15,0	2	4	20	25	118	75	65	GPMT	060204-UX	TS2	(1)TKY06F	9011344	302,00	
15,5	2	3	20	25	103	60	50	GPMT	060204-UX	TS2	(1)TKY06F	9011345	283,00	
15,5	2	4	20	25	118	75	65	GPMT	060204-UX	TS2	(1)TKY06F	9011346	302,00	
16,0	2	3	25	35	123	73	54	GPMT	060204-UX	TS2	(1)TKY06F	9011347	286,00	
16,0	2	4	25	35	139	89	70	GPMT	060204-UX	TS2	(1)TKY06F	9011348	319,00	
16,5	2	3	25	35	123	73	54	GPMT	060204-UX	TS2	(1)TKY06F	9011349	286,00	
17,0	2	3	25	35	126	76	58	GPMT	060204-UX	TS2	(1)TKY06F	9011350	286,00	
17,0	2	4	25	35	143	93	75	GPMT	060204-UX	TS2	(1)TKY06F	9011351	319,00	
17,5	2	3	25	35	126	76	58	GPMT	060204-UX	TS25	(1)TKY08F	9011352	286,00	
17,5	2	4	25	35	143	93	75	GPMT	060204-UX	TS25	(1)TKY08F	9011353	319,00	
18,0	2	3	25	35	129	79	61	GPMT	070204-UX	TS25	(1)TKY08F	9011354	286,00	
18,0	2	4	25	35	147	97	79	GPMT	070204-UX	TS25	(1)TKY08F	9011355	319,00	
18,5	2	3	25	35	129	79	61	GPMT	070204-UX	TS25	(1)TKY08F	9011356	286,00	
19,0	2	3	25	35	132	82	65	GPMT	070204-UX	TS25	(1)TKY08F	9011357	286,00	
19,0	2	4	25	35	151	101	84	GPMT	070204-UX	TS25	(1)TKY08F	9011358	319,00	
19,5	2	3	25	35	132	82	65	GPMT	070204-UX	TS25	(1)TKY08F	9011359	286,00	
20,0	2	3	25	35	135	85	68	GPMT	070204-UX	TS25	(1)TKY08F	9011360	286,00	
20,0	2	4	25	35	155	105	88	GPMT	070204-UX	TS25	(1)TKY08F	9011361	319,00	
20,5	2	3	25	35	135	85	68	GPMT	070204-UX	TS25	(1)TKY08F	9011362	286,00	
21,0	2	3	25	35	138	88	71	GPMT	070204-UX	TS25	(1)TKY08F	9011363	301,00	
21,0	2	4	25	35	159	109	92	GPMT	070204-UX	TS25	(1)TKY08F	9011364	337,00	
21,5	2	3	25	35	138	88	71	GPMT	070204-UX	TS25	(1)TKY08F	9011365	301,00	
22,0	2	3	25	35	141	91	75	GPMT	070204-UX	TS3	(1)TKY08F	9011366	301,00	
22,0	2	4	25	35	163	113	97	GPMT	070204-UX	TS3	(1)TKY08F	9011367	337,00	
22,5	2	3	25	35	141	91	75	GPMT	070204-UX	TS3	(1)TKY08F	9011368	301,00	
23,0	2	3	25	35	144	94	78	GPMT	090304-UX	TS3	(1)TKY08F	9011369	301,00	
23,0	2	4	25	35	167	117	101	GPMT	090304-UX	TS3	(1)TKY08F	9011370	337,00	
23,5	2	3	25	35	144	94	78	GPMT	090304-UX	TS3	(1)TKY08F	9011371	301,00	
23,5	2	4	25	35	167	117	101	GPMT	090304-UX	TS3	(1)TKY08F	9011372	337,00	
24,0	2	3	25	35	147	97	82	GPMT	090304-UX	TS3	(1)TKY08F	9011373	301,00	
24,0	2	4	25	35	171	121	106	GPMT	090304-UX	TS3	(1)TKY08F	9011374	337,00	
24,5	2	3	25	35	147	97	82	GPMT	090304-UX	TS3	(1)TKY08F	9011375	301,00	
25,0	2	3	32	42	155	100	85	GPMT	090304-UX	TS3	(1)TKY08F	9011376	280,00	
25,0	2	4	32	42	180	125	110	GPMT	090304-UX	TS3	(1)TKY08F	9011377	337,00	
25,0	2	4	32	42	180	125	110	GPMT	090304-UX	TS3	(1)TKY08F	9011378	339,00	
25,5	2	3	32	42	155	100	85	GPMT	090304-UX	TS3	(1)TKY08F	9011379	330,00	
26,0	2	3	32	42	158	103	88	GPMT	090304-UX	TS3	(1)TKY08F	9011380	330,00	
26,0	2	4	32	42	184	129	114	GPMT	090304-UX	TS3	(1)TKY08F	9011381	369,00	
26,5	2	3	32	42	158	103	88	GPMT	090304-UX	TS3	(1)TKY08F	9011382	330,00	
26,5	2	4	32	42	184	129	114	GPMT	090304-UX	TS3	(1)TKY08F	9011383	369,00	
27,0	2	3	32	42	161	106	92	GPMT	090304-UX	TS3	(1)TKY08F	9011384	330,00	
27,0	2	4	32	42	188	133	119	GPMT	090304-UX	TS3	(1)TKY08F	9011385	369,00	
27,5	2	3	32	42	161	106	92	GPMT	090304-UX	TS3	(1)TKY08F	9011386	330,00	
28,0	2	3	32	42	164	109	95	GPMT	11T0304-UX	TS4	(2)TKY015F	9011387	330,00	
28,0	2	4	32	42	192	137	123	GPMT	11T0304-UX	TS4	(2)TKY015F	9011388	369,00	
28,5	2	3	32	42	164	109	95	GPMT	11T0304-UX	TS4	(2)TKY015F	9011389	330,00	
28,5	2	4	40	50	202	137	123	GPMT	11T0304-UX	TS4	(2)TKY015F	9011390	369,00	
29,0	2	3	32	42	167	112	99	GPMT	11T0304-UX	TS4	(2)TKY015F	9011391	330,00	
29,0	2	4	32	42	196	141	128	GPMT	11T0304-UX	TS4	(2)TKY015F	9011392	369,00	
29,5	2	3	32	42	167	112	99	GPMT	11T0304-UX	TS4	(2)TKY015F	9011393	330,00	
30,0	2	3	32	50	175	120	102	GPMT	11T0304-UX	TS4	(2)TKY015F	9011394	330,00	
30,0	2	3	40	50	185	120	102	GPMT	11T0304-UX	TS4	(2)TKY015F	9011395	330,00	
30,0	2	4	32	42	205	150	132	GPMT	11T0304-UX	TS4	(2)TKY015F	9011396	369,00	
30,0	2	4	40	50	215	150	132	GPMT	11T0304-UX	TS4	(2)TKY015F	9011397	369,00	
30,5	2	3	40	50	185	120	102	GPMT	11T0304-UX	TS4	(2)TKY015F	9011398	372,00	
31,0	2	3	32	50	178	123	105	GPMT	11T0304-UX	TS4	(2)TKY015F	9011399	372,00	
31,0	2	3	40	50	188	123	105	GPMT	11T0304-UX	TS4	(2)TKY015F	9011400	372,00	
31,0	2	4	32	42	209	154	136	GPMT	11T0304-UX	TS4	(2)TKY015F	9011401	417,00	
31,0	2	4	40	50	219	154	136	GPMT	11T0304-UX	TS4	(2)TKY015F	9011402	417,00	
32,0	2	3	32	50	181	126	109	GPMT	11T0308-UX	TS4	(2)TKY15D	9011403	372,00	

Continúa Pág. siguiente →

Broca TAF para plaquita, 3xD y 4xD

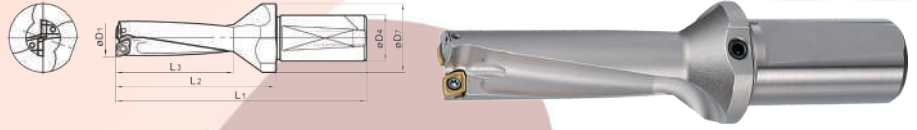


A03803



Descripción:

- Excelente rigidez.
- Con placa de 4 lados.



Ø D1 (mm.)	Nº dientes	Veces el Ø	Dimensiones (mm.)					Tipo de placa		Tornillo roscado	(1) Llave	(2) Llave	Código	Precio
			D4	D7	L1	L2	L3	Tipo	Tamaño					
32,0	2	3	40	50	191	126	109	GPMT	11T0308-UX	TS4	(2)TKY15D	9011404	372,00	
32,0	2	4	32	42	213	158	141	GPMT	11T0308-UX	TS4	(2)TKY15D	9011405	417,00	
32,0	2	4	40	50	223	158	141	GPMT	11T0308-UX	TS4	(2)TKY15D	9011406	417,00	
33,0	2	3	32	50	184	129	112	GPMT	11T0308-UX	TS4	(2)TKY15D	9011407	372,00	
33,0	2	3	40	50	194	129	112	GPMT	11T0308-UX	TS4	(2)TKY15D	9011408	372,00	
33,0	2	4	32	42	217	162	145	GPMT	11T0308-UX	TS4	(2)TKY15D	9011409	417,00	
33,0	2	4	40	50	227	162	145	GPMT	11T0308-UX	TS4	(2)TKY15D	9011410	417,00	
34,0	2	3	32	50	187	132	116	GPMT	11T0308-UX	TS4	(2)TKY15D	9011411	372,00	
34,0	2	3	40	50	197	132	116	GPMT	11T0308-UX	TS4	(2)TKY15D	9011412	372,00	
34,0	2	4	32	42	231	166	150	GPMT	11T0308-UX	TS4	(2)TKY15D	9011413	417,00	
34,0	2	4	40	50	231	166	150	GPMT	11T0308-UX	TS4	(2)TKY15D	9011414	417,00	
35,0	2	3	32	50	190	135	119	GPMT	140408-UX	TS55	(2)TKY25D	9011415	372,00	
35,0	2	3	40	50	200	135	119	GPMT	140408-UX	TS55	(2)TKY25D	9011416	372,00	
35,0	2	4	32	42	235	170	154	GPMT	140408-UX	TS5	(2)TKY25D	9011417	417,00	
35,0	2	4	40	50	235	170	154	GPMT	140408-UX	TS5	(2)TKY25D	9011418	417,00	
36,0	2	3	32	50	193	138	122	GPMT	140408-UX	TS55	(2)TKY25D	9011419	372,00	
36,0	2	3	40	50	203	138	122	GPMT	140408-UX	TS55	(2)TKY25D	9011420	372,00	
36,0	2	4	32	42	229	174	158	GPMT	140408-UX	TS5	(2)TKY25D	9011421	417,00	
36,0	2	4	40	50	239	174	158	GPMT	140408-UX	TS5	(2)TKY25D	9011422	417,00	
37,0	2	3	32	50	196	141	126	GPMT	140408-UX	TS55	(2)TKY25D	9011423	402,00	
37,0	2	3	40	50	206	141	126	GPMT	140408-UX	TS55	(2)TKY25D	9011424	402,00	
37,0	2	4	32	42	233	178	163	GPMT	140408-UX	TS5	(2)TKY25D	9011425	449,00	
37,0	2	4	40	50	243	178	163	GPMT	140408-UX	TS5	(2)TKY25D	9011426	449,00	
37,5	2	3	32	50	196	141	126	GPMT	140408-UX	TS55	(2)TKY25D	9011427	402,00	
37,5	2	3	40	50	206	141	126	GPMT	140408-UX	TS55	(2)TKY25D	9011428	402,00	
37,5	2	4	32	42	233	178	163	GPMT	140408-UX	TS5	(2)TKY25D	9011429	449,00	
37,5	2	4	40	50	243	178	163	GPMT	140408-UX	TS5	(2)TKY25D	9011430	449,00	
38,0	2	3	32	50	199	144	129	GPMT	140408-UX	TS55	(2)TKY25D	9011439	402,00	
38,0	2	3	40	50	209	144	129	GPMT	140408-UX	TS55	(2)TKY25D	9011440	402,00	
38,0	2	4	32	42	247	182	167	GPMT	140408-UX	TS5	(2)TKY25D	9011441	449,00	
38,0	2	4	40	50	247	182	167	GPMT	140408-UX	TS5	(2)TKY25D	9011442	449,00	
39,0	2	3	32	50	202	147	133	GPMT	140408-UX	TS55	(2)TKY25D	9011443	402,00	
39,0	2	3	40	50	212	147	133	GPMT	140408-UX	TS55	(2)TKY25D	9011444	402,00	
39,0	2	4	32	42	251	186	172	GPMT	140408-UX	TS5	(2)TKY25D	9011445	449,00	
39,0	2	4	40	50	251	186	172	GPMT	140408-UX	TS5	(2)TKY25D	9011446	449,00	
40,0	2	3	32	50	205	150	136	GPMT	140408-UX	TS55	(2)TKY25D	9011447	402,00	
40,0	2	3	40	50	215	150	136	GPMT	140408-UX	TS55	(2)TKY25D	9011448	402,00	
40,0	2	4	32	42	245	190	176	GPMT	140408-UX	TS5	(2)TKY25D	9011449	449,00	
40,0	2	4	40	50	255	190	176	GPMT	140408-UX	TS5	(2)TKY25D	9011450	449,00	
41,0	2	3	40	50	218	153	139	GPMT	140408-UX	TS55	(2)TKY25D	9011451	402,00	
41,0	2	4	40	50	259	194	180	GPMT	140408-UX	TS5	(2)TKY25D	9011452	449,00	
42,0	2	3	40	50	221	156	143	GPMT	140408-UX	TS55	(2)TKY25D	9011453	434,00	
42,0	2	4	40	50	263	198	185	GPMT	140408-UX	TS5	(2)TKY25D	9011454	486,00	
43,0	2	3	40	50	224	159	146	GPMT	140408-UX	TS55	(2)TKY25D	9011455	434,00	
43,0	2	4	40	50	267	202	189	GPMT	140408-UX	TS5	(2)TKY25D	9011456	486,00	
44,0	2	3	40	50	227	162	150	GPMT	140408-UX	TS55	(2)TKY25D	9011457	434,00	
44,0	2	4	40	50	271	206	194	GPMT	140408-UX	TS5	(2)TKY25D	9011458	486,00	
45,0	2	3	40	54	230	165	153	GPMT	140408-UX	TS55	(2)TKY25D	9011459	434,00	
45,0	2	4	40	54	275	210	198	GPMT	140408-UX	TS5	(2)TKY25D	9011460	486,00	
46,0	2	3	40	54	233	168	156	GPMT	140408-UX	TS55	(2)TKY25D	9011461	434,00	
46,0	2	4	40	54	279	214	202	GPMT	140408-UX	TS5	(2)TKY25D	9011462	486,00	
47,0	2	3	40	54	236	171	160	GPMT	140408-UX	TS55	(2)TKY25D	9011463	434,00	
47,0	2	4	40	54	283	218	207	GPMT	140408-UX	TS5	(2)TKY25D	9011464	486,00	
48,0	2	3	40	54	239	174	163	GPMT	140408-UX	TS55	(2)TKY25D	9011465	434,00	
48,0	2	4	40	54	287	222	211	GPMT	140408-UX	TS5	(2)TKY25D	9011466	486,00	
49,0	4	3	40	58	247	182	167	GPMT	090304-UX	TS3	(1)TKY08F	9011467	507,00	
49,0	4	4	40	58	296	231	216	GPMT	090304-UX	TS3	(1)TKY08F	9011468	566,00	

Placas GCMT - GPMT

A03801

Tipo	Ø Broca (mm.)	Tipo de placa		Calidad	Acero	Inoxidable	Fundición	Materiales no ferrosos	Aleaciones de titanio	Geometría			Código	Precio
		Tipo	Tamaño							R	L1	L2		
GPMT	Ø 12 - Ø 14,5 Ø 15 - Ø 17,5 Ø 18 - Ø 22,5 Ø 23 - Ø 27 Ø 49 - Ø 56 Ø 28 - Ø 34 Ø 35 - Ø 48	U2	VP15TF	040204	●	●	●	-	●	5,0	2,38	0,4	9011469	11,20
				060204	●	●	●	-	●	5,56	2,38	0,4	9011470	11,20
				070204	●	●	●	-	●	6,35	2,38	0,4	9011471	11,20
				090304	●	●	●	-	●	7,94	3,18	0,4	9011472	11,20
				090304	●	●	●	-	●	7,94	3,18	0,4	9011472	11,20
				11T308	●	●	●	-	●	9,525	3,97	0,8	9011473	12,90
				140408	●	●	●	-	●	12,70	4,76	0,8	9011474	15,30